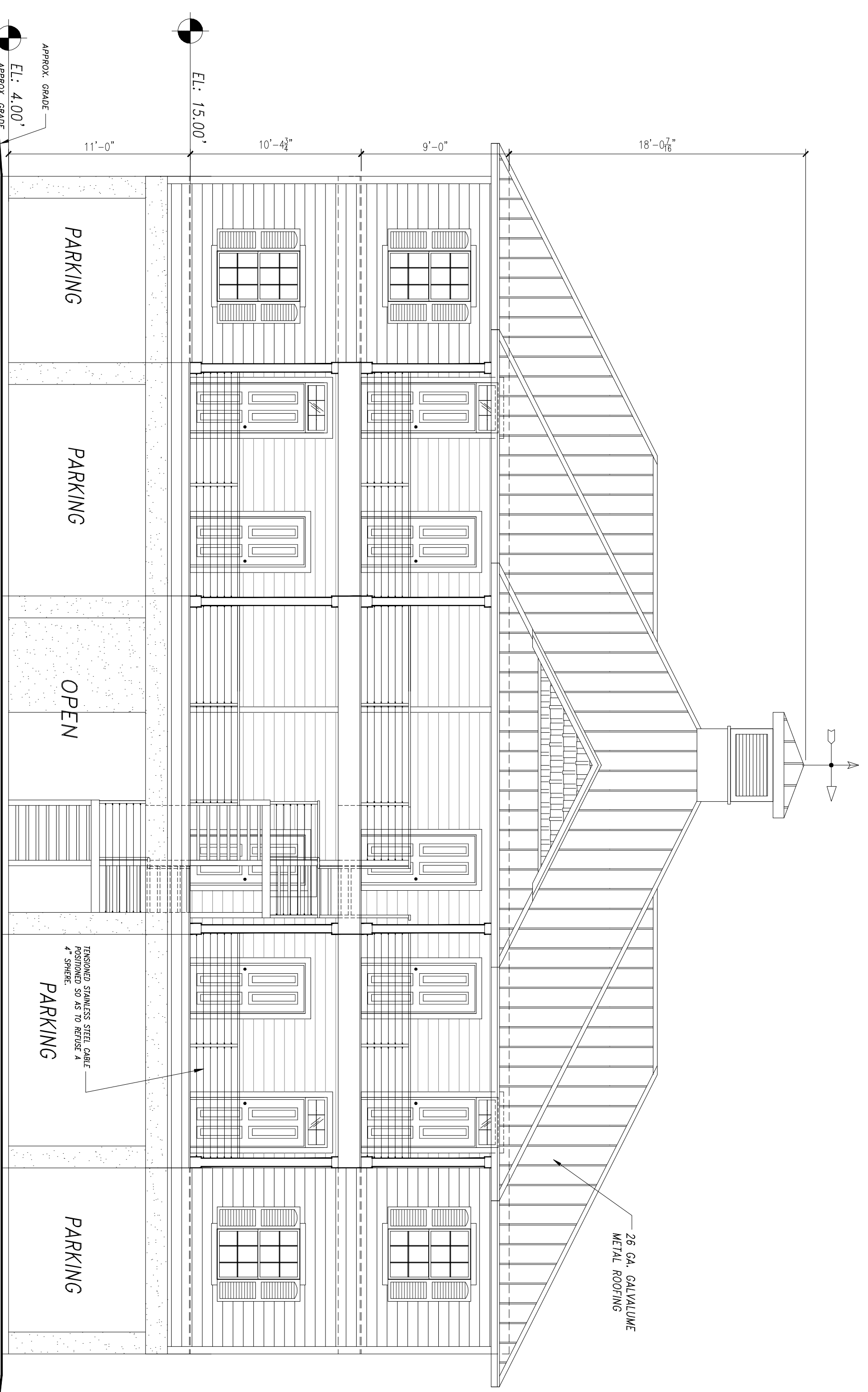


Typical End Elevation
SCALE: 3/16" = 1'-0"



Front Elevation
SCALE: 3/16" = 1'-0"

Typical Six Unit Condo Building

DRAWING ISSUE
DATE: 04/29/2016
REVISED: 05/16/2017

PROJECT
THE VILLAGE AT PIRATES COVE
OZELLO (UNINCORPORATED
CITRUS COUNTY) FLORIDA
PROPOSED PLANNED
UNIT DEVELOPMENT

DESIGNED AND DRAWN BY:

CADTEC

Drafting Studio

INCORPORATED
PHONE: (853) 12-2343
CADTECSTUDIO@GMAIL.COM

Architect:

Thomas H. Williford
Architect, P.A.
Fl. Reg. #9900

P.O. Box 236
Holder, Florida 34445
352-476-1937

LAND USE PLANNER

R. Bruce McLaughlin AICP, MCP
Bruce McLaughlin Consulting Services, Inc.
900 Gulf Blvd, Suite 303
Indian Rocks Beach, FL 33785
(727) 595-7634

SHEET TITLE:

SIX UNIT CONDO BLDG.

SHEET NUMBER

A2