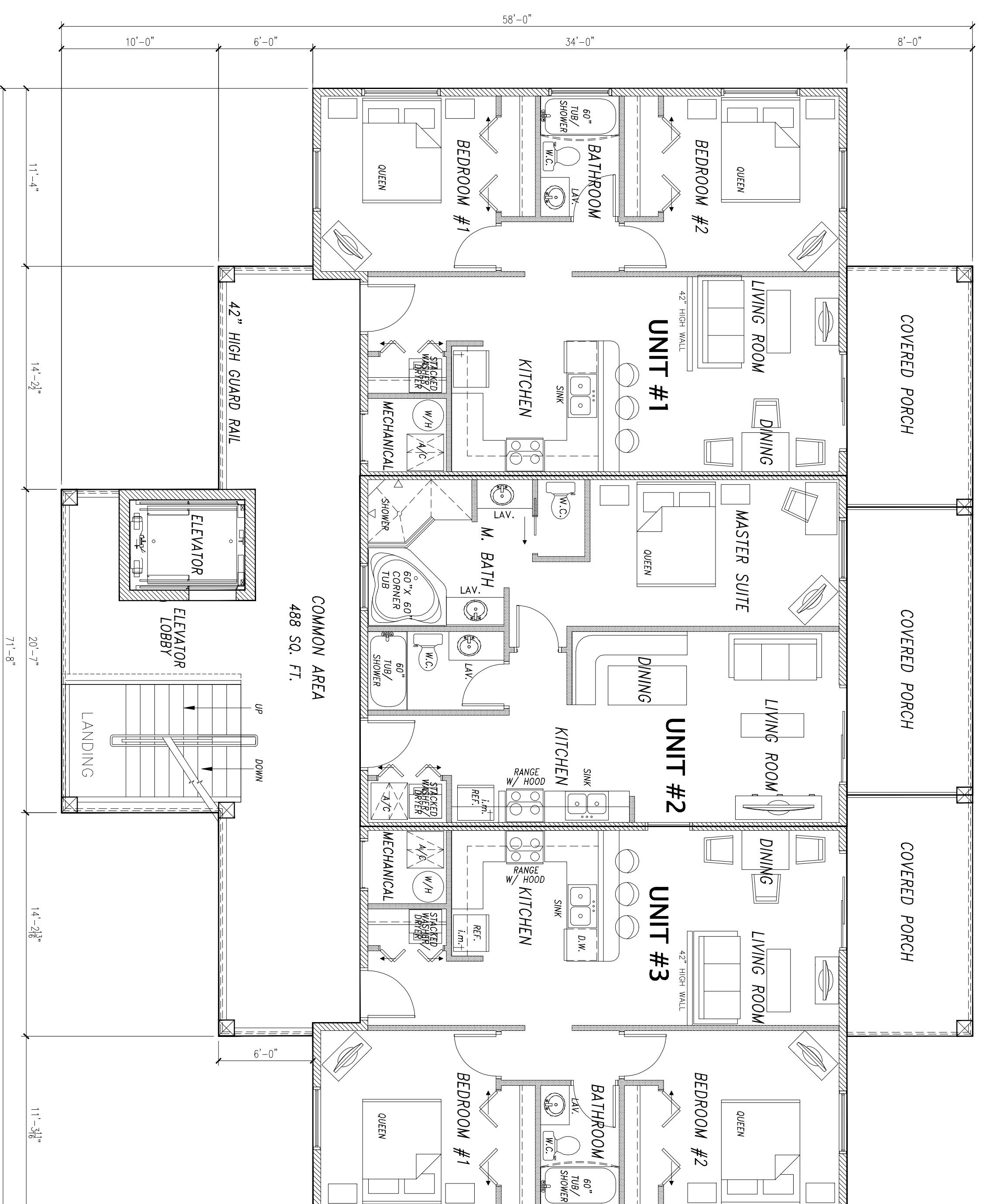
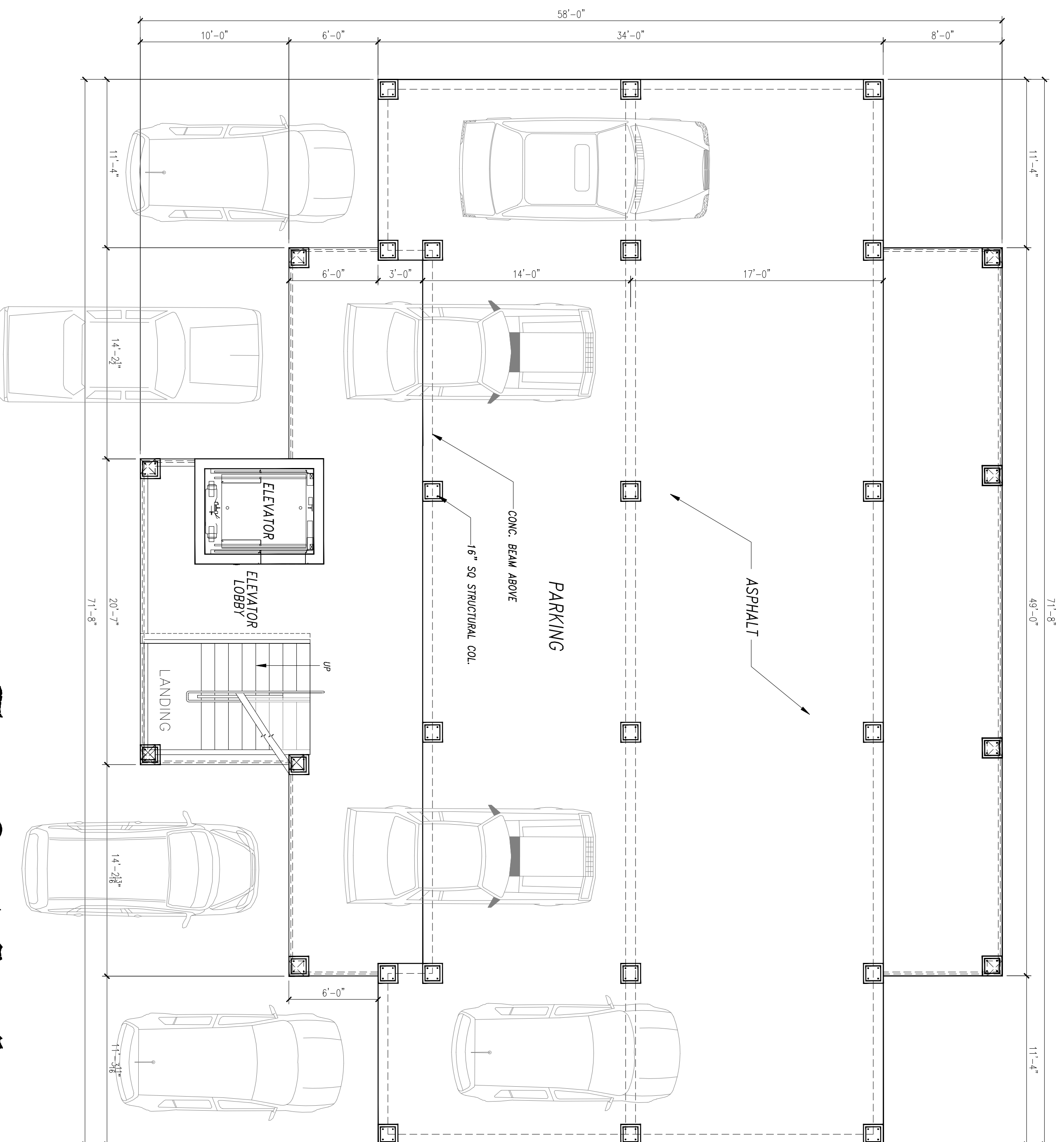


AREA CALCULATION

GROSS	9969 SQ. FT.
GROUND FLOOR	3323 SQ. FT.
FIRST FLOOR	
LIVING AREA	2195 SQ. FT.
PORCH	414 SQ. FT.
COMMON AREA	488 SQ. FT.
TOTAL:	3097 SQ. FT.
SECOND FLOOR	
LIVING AREA	2195 SQ. FT.
PORCH	414 SQ. FT.
COMMON AREA	488 SQ. FT.
TOTAL:	3097 SQ. FT.
TOTAL:	9517 SQ. FT.



Six Unit Condo Building

DRAWING ISSUE
 DATE: 04/29/2016
 REVISED: 05/18/2017

PROJECT
 THE VILLAGE AT PIRATES COVE
 OZELLO (UNINCORPORATED)
 CITRUS COUNTY FLORIDA
 PROPOSED PLANNED
 UNIT DEVELOPMENT

DESIGNED AND DRAWN BY:
CADTEC
Drafting Studio
 1-N-S-B-R-P-B-A-T-E-D
 PHONE: (852)12-2242
 CADTEC@GMAIL.COM

ARCHITECT:
 Thomas H. Williford
 Architect, P.A.
 Fl. Reg. #9900
 P.O. Box 236
 Holder, Florida 34445
 352-476-1937

LAND USE PLANNER
 R. Bruce McLaughlin AICP/MCIP
 Bruce McLaughlin Consulting Services, Inc.
 900 Gulf Blvd, Suite 303
 Indian Rocks Beach, FL 33785
 (727) 595-7634

SHEET TITLE:
 SIX UNIT CONDO BLDG.
 SHEET NUMBER
A1